

Betriebsanleitung

Translation of the original instruction manual



DE Ventilator PV 12000

EN Fan PV 12000

www.heylo.de

Version 09/2020

Art.-Nr./item no. 1110831

Table of contents

12 About this operating manual -----	21	21 Technical details-----	33
12.1 The purpose of this manual. -----	21	22 Supplementary documents -----	34
12.2 Keep the manual safe and at hand at all times-----	21	22.1 List of wear and spare parts -----	34
12.3 Symbols and definitions used -----	21	22.2 Declaration of conformity -----	34
12.4 Warranty-----	22	22.3 Circuit diagram-----	34
12.5 Contact to HEYLO GmbH -----	22		
13 Safety-----	23		
13.1 Operating conditions-----	24		
13.2 Personal protective equipment-----	24		
14 Product description-----	25		
14.1 Identification of the machine -----	25		
14.2 General description -----	25		
14.2.1 Intended use -----	26		
14.2.2 Foreseeable misuse-----	26		
14.3 Safety devices-----	26		
14.4 Operating and display elements -----	26		
14.5 Operating and display elements -----	27		
15 Transport and installation -----	27		
16 Commissioning and operation-----	28		
17 Faults-----	28		
17.1 Restarting after an unscheduled downtime -----	29		
17.2 Malfunctions during operation-----	29		
18 Cleaning and maintaining the device -----	30		
18.1 Servicing, inspecting and cleaning the device -----	31		
18.2 Wear and spare parts -----	32		
19 Repairs-----	32		
20 Decommissioning, storage and disposal----	33		
20.1 Decommissioning -----	33		
20.2 Storing the device -----	33		
20.3 Disposal -----	33		

12 About this operating manual

These operating instructions (hereinafter referred to as the manual) enable the operator to use the fan (hereinafter called the device) safely. It describes the device manufactured by HEYLO GmbH (hereinafter referred to as HEYLO).

- Please read the manual carefully.
- Follow all safety instructions.

12.1 The purpose of this manual.

The manual serves the company operating the device and all the staff who use it as a guide and reference book on the operation and technical aspects of the device.

The technical data on settings, maintenance and the electrical features have been prepared for specialists who are specially authorized for these areas of responsibility. Unauthorized persons may not carry out the work specified here.

12.2 Keep the manual safe and at hand at all times

The manual must always be kept where the machine is located. The company operating the device must make the instructions available to the technical staff and all the operators of the device throughout the service life of the device.

12.3 Symbols and definitions used

This section explains the symbols used in this manual.

Instructions

The safety instructions in this manual contain the following elements:

DANGER

Warning indicating an immediate danger for people

This safety instruction warns of an **immediate** dangerous situation which can lead to serious injury or death.

WARNING

Warning indicating a potential danger for people.

This safety instruction warns of a potentially hazardous situation which, if not avoided, could result in death or serious injury.

CAUTION

Warning indicating a potential danger for people.

This safety instruction warns of a potentially hazardous situation which, if not avoided, could result in minor to moderate injury.

Attention

Warning of possible damage to property.

This safety instruction warns of damage to machinery.

A safety instruction consists of (in addition to the symbol and the signal word):

- Signal word
- Type and source of hazard
- Effects
- Escape (= measures to escape from the danger)

Example



Electric shock due to high voltage (type and source of danger)

Death from electric shock! (*effects*)

- a) Wait four minutes before starting work on the motor connections! (*measures*)

Important or helpful instructions, information and tips have the following structure:



Instruction

User tips and useful information that help you to make optimal use of the device's functions are listed below this symbol.

Mandatory symbols

The manual uses the following mandatory symbols.

Symbol	Meaning
	General instruction This symbol indicates instructions and may signal prohibitions.

Tab. 5: Mandatory symbols

Markings in the text

- Listings are indicated by an indent mark (-).
- Text marked in this way highlights references and hyperlinks referring to related topics, internet addresses, and other information.
- Text highlighted in **bold** indicates highlighting or subheadings.
- Menu items, tabs, buttons and soft key buttons are set in angled brackets <...>, e.g. <Stop>.
- Sequences are enclosed in angle brackets <...>, e.g. <Login/Semi-automatic/Start>.

- Buttons or indicator lights on a keyboard or control panel are enclosed in square brackets, e.g. [Start].
- Text highlighted in this way SPS indicates a cross-reference to the glossary with an explanation of terms.

Action instructions

As a rule, action instructions have the following structure:

- ✓ Conditions that are necessary in order for the action to be carried out may also be referred to here.
- a) These are followed by operating steps
- b) Another operating step
 - ⇒ Partial result after one operating step
- c) Another operating step
 - ⇒ Overall result of an action instruction

12.4 Warranty

In general, the "General Terms and Conditions of Sale and Delivery" of HEYLO GmbH shall apply. Operating the device in accordance with its intended use is the prerequisite for a successful claim for statutory liability for material defects within the first two years of the date of purchase.

12.5 Contact to HEYLO GmbH

If you have any questions about the device, please get in touch with your sales partner.

We will also gladly provide information ourselves. Please get in touch with one of our contacts listed below or visit us on the Internet, providing the following information:

- Your name and address,
- Contact person at your company,
- The data on the rating plate: type and serial no.,

Address: HEYLO GmbH
Im Finigen 9
28832 Achim

Tel. no.: +49 (0) 4202 / 97 55 0

Fax: +49 (0) 4202 / 97 55 97

Email: info@heylo.de

Internet: <http://www.heylo.de>

Tab. 6: Registered office

Address: HEYLO (Switzerland) AG
Südstraße 16
CH-3250 Lyss

Tel. no.: +41 (0) 32 / 387 16 80

Fax: +41 (0) 32 / 387 16 85

Email: info@heylo.ch

Internet: <http://www.heylo.ch>

Tab. 7: Registered office in Switzerland

13 Safety

The device is built using state-of-the-art technology and in accordance with the recognised safety rules. Nonetheless, danger to the life and limb of the operator or third parties may arise if it is not used properly. Similarly, the device or other property and material may become damaged.

The device must only be used:

- for the purpose for which it was intended
- and when it is in perfect technical condition.

The device must not be restarted until any fault that may impair safety has been rectified.

Any persons installing, operating, maintaining or cleaning the device must be aware of the hazards that may arise from electrically operated equipment in environments with a high humidity, and they must have read and understood this operating manual.

Avoiding dangerous situations

The following instructions apply to anyone working on or with the device:

- The operating manual must be kept at hand, in complete and legible form, at the place where the device is used.
- The device may only be used for its intended purpose.
- The device must be fully functional and in faultless condition. The condition of the device must be checked regularly before use.
- Accident prevention regulations and any local rules must always be adhered to.

Information on electrical equipment

During all work on electrical equipment, the following principles apply:

- The device is operated electrically. There is a risk of fatal injury from faulty installation of the electrical system or from a breakdown of the insulation during operation.
- Only electricians are allowed to access and work on electrical equipment. Always keep switchboxes closed.
- On completion of any work ensure that all safety equipment is functioning properly.
- No unauthorised modifications may be made to the device.
- The device is not approved for operation in areas with an explosive atmosphere.

Information on transport and installation

During transport and installation, the following principles apply:

- Check the device on receipt and before every use for visible turbine blade, covering or housing damage. Any and all such damage must be rectified before the device may be operated.

- Always use the handle on the top of the device when carrying it.
- Always ensure that the device switch is in the OFF position before connecting the power cable.
- The device may only be moved when switched off.

Instructions for operation

During operation, the following principles apply:

- Only a trained operator may work on the device.
- Children must be kept well away from the device.
- Do not modify, dismantle or take any safety devices out of operation. The safety devices must be inspected at regular intervals.
- All the covering panels, covers and hoods must be installed as intended.
- Structural changes to the device are not allowed.
- Always wear the prescribed personal protective equipment when operating the device.

Maintenance and troubleshooting instructions

During maintenance and troubleshooting, the following principles apply:

- Only suitably qualified staff may perform this work on the device.
- The device must be switched off and the power cable is disconnected.

13.1 Operating conditions

Under inadmissible operating conditions, the operational safety and the performance of the device may not be sufficiently ensured. Inadmissible operating conditions must therefore be avoided at all times.

The device must not be used in rooms with explosive atmospheres.

The device is intended for mobile or stationary use indoors, on construction sites and in garages and storage spaces / rooms. The air temperature in the device may not exceed 60 °C.

Only original spare parts or parts approved by the manufacturer may be used.

The following conditions and safety rules must always be adhered to.

- Always handle the device with care. Never drop the device, throw it or transport it in any vehicle without securing it properly.
- The device must be installed upright and stable. It must not fall over or slip even under full load.
- Do not cover the device during operation.
- The device must not be operated in puddles or in stagnant water. If the device or the connection cable gets wet then it must be dried thoroughly before the device may be operated.
- Make sure that the device does not suck in any oil, grease or other contaminant.
- The mains voltage must correspond to the details on the rating plate.
- Extension cables must be selected according to the performance data on the rating plate, in order to prevent overload.
- The socket used must be earthed or protected with a current operated earth leakage circuit breaker when installed indoors.

People under the influence of alcohol, drugs or medication must not operate or maintain the device.

13.2 Personal protective equipment

Personal protective equipment serves to protect staff against any hazards that could affect their safety or health at work.

The following personal protective equipment must be worn during transport and installation:

- Protective gloves to prevent the hands becoming crushed or trapped
- Safety shoes to protect against impacts or falling over

During operation must be worn:

- eye protection against airborne particles.
- ear defenders against noise.

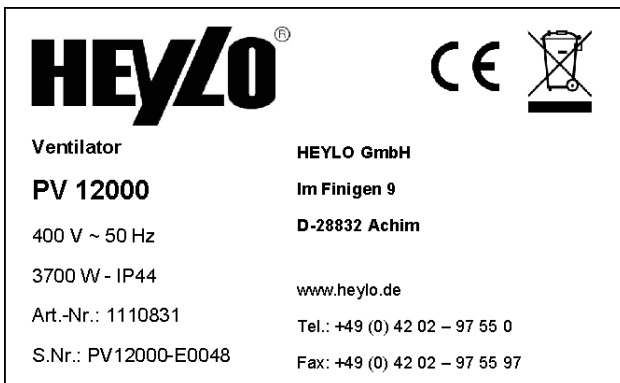
14 Product description

14.1 Identification of the machine

The device can be clearly identified with the rating plate on the back of the device.

Rating plate

The rating plate contains the following device information.



The rating plate contains the following device information.

- Model
- Rating number
- Serial number
- Electrical connection information
- Performance data

14.2 General description

The device is the ideal tool for use in industry and trade. It is suitable for ventilation when working in shafts, for drying cavity spaces after water damage

or for air extraction when welding in tanks and containers. The device components are quick to assemble, the hose is quick to connect to the air outlet or suction end and everything can be packed away safely after work. Due to its high protection class, the device is especially suitable for outdoor use and on building sites.

The device must only be used:

- for the purpose for which it was intended,
- and by observing all instructions in the chapter Safety.

Assembly, scope of delivery and accessories

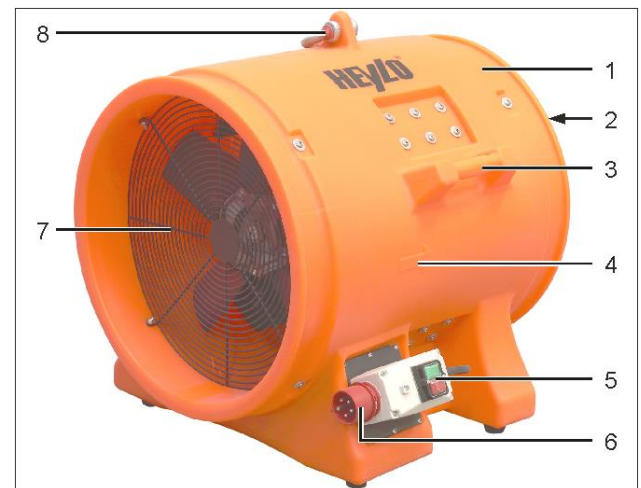


Fig. 5: Overview with safety equipment

1	Protective housing	2	Protective grille preventing access in front of the air outlet
3	Carrying handles	4	Air flow direction
5	Device switch	6	Connection for power cable and phase inverter
7	Protective grille preventing access in front of the air intake	8	Crane lugs

The scope of supply includes:

- Fan.

- Operating manual.
- You will find available accessories in Accessories list.

Mode of operation

The device generates a negative pressure on the suction end and an overpressure at the air outlet on the pressure end. The air flow direction is indicated with an arrow. The generated air current can be used to ventilate areas as well as to extract air from areas.

The housing and motor seal complies with the high IP 44 protection class and offers effective protection against dust and water.

If the device is switched on with the device switch, it will run in continuous operating mode. The fan extracts ambient air through the air intake and releases it through the air outlet.

See also

 Intended use [▶ 26]

14.2.1 Intended use

The device is intended exclusively for commercial use in ventilating air in closed rooms at atmospheric pressure and in weather-protected outdoor areas in normal operation.

Intended use also includes observance of the operating conditions (see *Operating conditions* [▶ 24]).

Any other use or any application transcending the specified use is considered improper use. Improper use will result in all warranty claims becoming void.

14.2.2 Foreseeable misuse

The following types of misuse can be envisaged:

- Ventilating air without adhering to the specified minimum spacing and operating conditions.

14.3 Safety devices

NOTICE

The following safety devices is listed in the device overview in the chapter General description.

Persons can be seriously injured on the device if the safety devices are not properly installed and set. Do not modify, dismantle or take any of the safety devices out of operation. All the safety devices must be freely accessible at all times.

Familiarize yourself with all the safety equipment to prevent, or at least minimise, damage to tangible assets and/or injuries to persons.

Protective grilles preventing access are installed in front of the air intake and in front of the air outlet.

The feet ensure that the device remains fixed in place.

Safety guards

Safety guards prevent or hinder direct access to the rotating or moving parts of the device. Safety guards have no influence on the movement of device components. Such equipment may only be removed for set-up, maintenance or repair work and must be reinstalled before restarting.

The device has the following safety covers:

- Protective grille preventing access installed in front of the turbine blade (air intake end).
- Protective grille preventing access installed in front of the air outlet.
- Protective cover on the electrical components

14.4 Operating and display elements

The device is operated solely with the device switch on the back of the device. The device switch turns the device on and off.

See also

📖 Safety devices [▶ 26]

14.5 Operating and display elements

The device is operated solely with the device switch on the device. The device switch turns the device on and off.

See also

📖 Safety devices [▶ 26]

15 Transport and installation

The device has been assembled, set up and tested at the factory. In order to rule out any life-threatening injuries and damage to materials during transport and installation, please observe the following:

- Transport and installation work may only be carried out by qualified and authorised persons.
- Transport routes must be large enough.
- Adhere to the *Operating conditions* [▶ 24] and the differing sorts of danger.

DANGER

Danger to life due to electric shock

Touching electrically live parts can be fatal.

- a) Always turn the device off at the device switch and disconnect the power cable before moving it.
 - b) Never pull the device by the power cable; always move it by the handle provided.
-

DANGER

Danger to life due to electric shock or device fire due to short circuit

Electronic rpm controllers increase the risk of fire and short circuit.

- a) Never use any electronic rpm control means.
-

CAUTION

Risk of injury due to the device tipping over.

If the device tips over or falls during transport, you may be injured.

- a) Secure the device from falling or sliding over during transport.
 - b) Wear safety shoes and protective gloves.
 - c) Use the handle provided to move the device.
-

- a) Check the scope of delivery for completeness. Report any transport damage or an incomplete delivery to your dealer immediately.
- b) Dispose of the packaging in accordance with the applicable local regulations.
- c) If necessary, lift the device using the carrying handles or the crane lug and then lower it on the ground.
- d) Move the device to its installation site.
- e) Ensure that you adhere to the *Operating conditions* [▶ 24].
- f) Make sure the power cable is undamaged.
- g) Insert a suitable power cable into the device's CEE socket.
- h) Make sure the device is securely fastened in place, cannot move and will not tip over either in operation or otherwise.
 - ⇒ The device is then set up and installed. Air hoses can be attached to extract the exhaust air (see the Accessories list).

Positioning the device

- The direction of air flow (arrow on the housing) should be facing the wall.
- When installing several devices together, maintain a distance of 3.0 to 4.25 m between the devices and keep the air blowing in the same direction.
- Open inner doors to ensure a good air circulation. Secure the doors using a wedge to prevent the air current closing them.

16 Commissioning and operation

WARNING

Risk of injury and hearing damage

The device can project ambient particles which can cause noise emissions during operation (see *Technical details* [▶ 33]).

- a) Wear hearing protection and safety goggles.

Commissioning

- a) Make sure that the device is not standing on a wet base and ensure that it stands upright and safe.
- b) Use the arrow on the device housing to check that the fan is turning in the correct direction by **briefly** switching the device on and **immediately** off again using the device switch.

You can change the direction of rotation with the phase inverter in the connection socket. To do this, turn the phase inversion element by 180 ° using a suitable slot screwdriver.

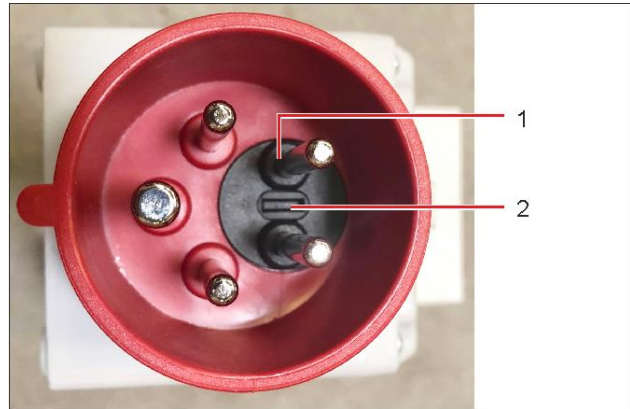


Fig. 6: Phase inverter

1	Element for phase inversion	2	Insert for slot screwdriver
---	-----------------------------	---	-----------------------------

Switching the device on

- a) Turn the device switch ON.
 - ⇒ The continuous operating mode will start and the device will run until turned off using the device switch.
 - ⇒ The device is now switched on.

Switching the device off

- a) Switch off the device switch with the red button.
 - ⇒ The device is now switched off.

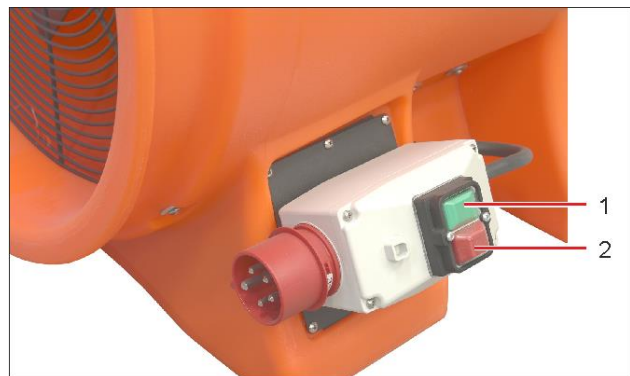


Fig. 7: Device switch

1	ON button	2	OFF button
---	-----------	---	------------

17 Faults

Observe the following principles if you want to determine the cause of a malfunction Search and malfunctions and eliminate it:

These tasks may only be carried out by trained and authorised specialists.

Interventions may only be carried out by the manufacturer or by persons authorised by the manufacturer during the statutory warranty period.

- a) Wear suitable protective clothing.
- b) Before recommissioning, install all the safety devices as attached at the factory.
- c) Check that the safety devices are functioning properly.
- d) After completing the task, remove all the tools and objects from the working area around the device.

Safety instructions regarding malfunctions

 **DANGER**

Danger to life due to electric shock

Touching electrically live parts can be fatal.

- a) Switch off the device and disconnect the power cable.

 **CAUTION**

Danger due to missing safety covers

Missing safety covers can lead to injuries.

- a) Before switching on the device, install all the safety covers that may have been removed for troubleshooting purposes.
- b) Check all the safety devices before switching on the device.

17.1 Restarting after an unscheduled downtime

Power failure

After a power failure, the device will continue to operate in continuous operating mode with the device switch turned on.

17.2 Malfunctions during operation

Malfunction	Possible cause	Remedy
Device motor is not running	No or incorrect power supply	Check the power cable and the mains connection.
	Device switch not ON	Turn the switch ON
	Turbine blade is blocked	Turn device off and allow to cool. Then remove any blockage.
	Device switch broken off	Request replacement switch from your dealer or HEYLO.
	Loose wiring	Check wiring and retighten as needed.
	Motor protection has been triggered	Switch the device off and then on again. Check the motor safety equipment if necessary.
Device operates but the turbine	Motor mounting bent so that turbine blade jams.	Remove motor from housing, replace or repair bent mounting.

Malfunction	Possible cause	Remedy
blade runs irregularly or bumps against something	Major impact knocked the motor off its mounting and jammed the turbine blade.	Remove the motor from its housing and reinsert correctly.
Device vibrates and is excessively loud	Dirt accumulation on the turbine blade	Clean the turbine blade
	The device is not securely upright	Check installation and correct if necessary
	Imbalance of turbine blade	Balance the turbine blade or replace it
	Turbine blade bent	Replace the turbine blade
	Motor shaft bent	Replace the motor

Tab. 8: Troubleshooting table

18 Cleaning and maintaining the device

The following principles apply when cleaning and maintaining the device:

These tasks may only be carried out by trained and authorised specialists.

- a) Switch off the device before starting work and disconnect the power cable.
- b) Wear suitable personal protective equipment.
- c) Before recommissioning, install all the safety devices as attached at the factory.
- d) Check that the safety devices are functioning properly.
- e) After completing the task, remove all the tools and objects from the working area around the device.

DANGER

Danger to life due to electric shock

Touching electrically live parts can be fatal.

- a) Switch off the device and disconnect the power cable.
-

CAUTION

Danger from the device being unintentionally started up

Uncontrolled starting of the fan can lead to injuries.

- a) Switch off the device at the device switch and disconnect the power cable.
-

CAUTION

Danger due to missing safety covers

Missing safety covers can lead to injuries.

- a) Before switching on the device, install all the safety covers that may have been removed for troubleshooting purposes.
 - b) Check all the safety devices before switching on the device.
-

CAUTION

Risk of injury caused by contamination with harmful substances

There is a risk of releasing harmful substances when cleaning and maintaining the device. This may lead to contamination with harmful substances and injuries.

- a) Wear protective gloves and respiratory protection.
-



Attention

Damage to property through insufficient maintenance

Insufficient maintenance leads to higher wear and expensive repairs.

- a) Carry out the necessary maintenance work in accordance with the manufacturer's instructions.
- b) Observe the manufacturer's instructions on looking after the mechanical components.
- c) In the event of damage to the mechanical equipment, take the device out of operation immediately and arrange for professional repair using original spare parts.



NOTICE

Performing regular maintenance

Regular maintenance constitutes one element of the intended use of the device and it is an absolute prerequisite for safe and efficient operation.

18.1 Servicing, inspecting and cleaning the device



NOTICE

Suitable cleaning agents

You can obtain suitable cleaning agents for cleaning your device from your dealer or directly from HEYLO.

The cleaning intervals for the device will depend on the conditions of use. Therefore check and clean the device regularly.

The electrical system must be checked regularly for signs of damage.

Proceed as follows to clean and check the condition of the device:

- a) Turn off the device at the device switch.
- b) Disconnect the power cable.

Cleaning the outside of the device



Attention

Device damage

The device must not be cleaned with a pressure washer/high-pressure cleaner as it can become damaged as a result.

- a) **CAUTION! Do not use solvents (e.g. MEK, acetone) that contain chlorinated hydrocarbons. These may damage the device.**
Clean the housing with a mild detergent and water.
- b) Restore the original shine using the HEYLO plastic cleaner or vinyl cleaner and polish made for plastics used in cars, for example.

Cleaning the device



Attention

Device damage

To avoid damage to electrical components please do not wash the device with a hose or water under pressure.

- a) Dry any electrical components that get wet immediately.

Regularly clean the device to remove accumulated dust and dirty parts.

- a) Remove any lint or other contamination which have accumulated on the air intake, on the side parts, on the turbine blade and on the motor with the help of vacuum or compressed air (no high pressure!).

- b) Install all the safety devices which may have been dismantled for the purpose of cleaning as attached at the factory.

⇒ The device is cleaned.

Device inspection

- a) Check all visible components and make sure they are correctly installed.
- b) Check the rubber feet on the framework for wear and tear and damage.

NOTICE! Motor ball bearing: The ball bearings are lubricated for life. For this reason, do not apply grease to the ball bearings.

Inspecting the electrical system



DANGER

Touching electrically live parts can be fatal.

Improper or inadequate inspection and maintenance can lead to device components becoming live during operation due to a defect.

- a) Inspection of the electrical system should only be conducted by a qualified electrician.
- b) Once the work has been completed all safety equipment must be reinstalled as specified and checked.

-
- a) Check all the device's electrical components visibly for signs of external damage, loose contacts and contamination. Remove the safety cover in order to inspect the internal wiring. Remove any external contamination with a lint-free cloth and replace any defective or damaged components.
- b) If used commercially in Germany: Conduct an annual DGUV V3 examination in accordance with German statutory accident insurance (DGUV) rules and document in a report.
- ⇒ The servicing and inspection of the device is then complete.

18.2 Wear and spare parts

Spare parts must meet the technical requirements specified by HEYLO. HEYLO original spare parts must meet stringent requirements.

HEYLO assumes no warranty for any damage caused by the use of spare parts from other manufacturers.

Enquiries and orders For wear and spare parts, please contact your dealer or HEYLO directly, providing the following information:

- Device type,
- Serial number,
- Year of construction,
- Designation of the component,
- Quantity,
- Form of shipping.

See also

-  Contact to HEYLO GmbH [▶ 22]

19 Repairs

The following section describes who may repair the device and how it can be repaired.

NOTICE

Repairs may only be carried out by staff authorized by the manufacturer during the warranty period of the device.

Repairs performed by the company operating the device

After the statutory warranty has expired, repairs may be carried out by the company operating the device, provided appropriate expertise is shown. HEYLO will not assume any liability for these repairs.

Contact the HEYLO service department or your dealer if you have any questions about repairs.

See also

 [Contact to HEYLO GmbH \[▶ 22\]](#)

20 Decommissioning, storage and disposal

The following principles apply for the decommissioning, storage and disposal of the device:

These tasks may only be carried out by trained and authorised specialists.



Danger to life due to electric shock

Touching electrically live parts can be fatal.

- a) Switch off the device and disconnect the power cable.

20.1 Decommissioning

- a) Switch off the device at the device switch and disconnect the power cable.
 - b) Clean the device (see Servicing, inspecting and cleaning the device).
 - c) Store the device in a frost-free and dry environment.
- ⇒ The device is now temporarily decommissioned.

See also

 [Contact to HEYLO GmbH \[▶ 22\]](#)

20.2 Storing the device

Storage information can be found in Technical details.

20.3 Disposal

The device is primarily made of recyclable materials. It does not represent any danger to the operator and the environment when handled properly. However,

operation of the device may lead to the generation of waste containing substances that are environmentally hazardous or harmful to health. These materials must be disposed of properly in accordance with the regulations.

The individual components of the device (e.g. metal components, etc.) must be taken to a qualified disposal and recycling company. Commission a qualified, specialist company to dispose of and recycle the device.

See also

 [Contact to HEYLO GmbH \[▶ 22\]](#)

21 Technical details

Model	PV 12000
Dimensions H x W x D [mm]	720 x 640 x 655
Weight [kg]	54
max. air output of fan [m ³ /h] (measurement in accordance with DIN 5801)	10550
Pressure (Pa) max.	744
Protection class	IP 44
Supply voltage	400 V / 50 Hz
Current consumption [A]	13.0
Connected load [kW]	3.7
Sound emission [dB(A)] (3 m)	90
Max. fluid temperature in °C	60
Hose [Ø in mm]	550
Max. hose length [m]	12 x 7.6

22 Supplementary documents

22.1 List of wear and spare parts

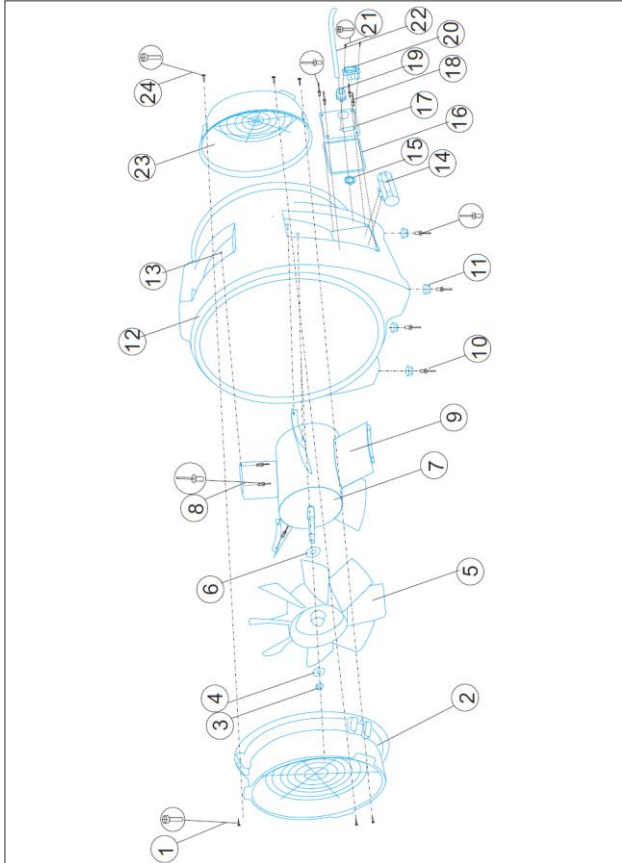


Fig. 8: PV 12000 spare parts

No.	HEYLO Art. No.	Designation
2	1451311	Hose connections
23	1451373	Protective grille
11	1451314	Rubber foot
16	1110831-2	Motor protection incl. complete switch
17	1110831-3	Housing for motor protection switch
7+9	1451312	Motor
5	1451315	Fan wheel
22	1200093	Connection cable with 16A CEE plug

22.2 Declaration of conformity

EC Declaration of Conformity IIA in accordance with the EC Machinery Directive 2006/42/EC



For device series: Fans / PowerVent

Type: PV 12000

HEYLO GmbH, of Im Finigen 9, 28832 Achim, Germany, hereby declares that the design and construction of the equipment described in this document in the version provided by us comply with the fundamental health and safety requirements defined in EC Directive 2006/42/EC.

Applicable EC directives:

Machinery Directive	2006/42/EC
Low-voltage Directive	2014/35/EU
EMC Directive	2014/30/EU
RoHS	2011/65/EU

Changes to the machinery made without our consent will render this declaration void.

Applied standards:

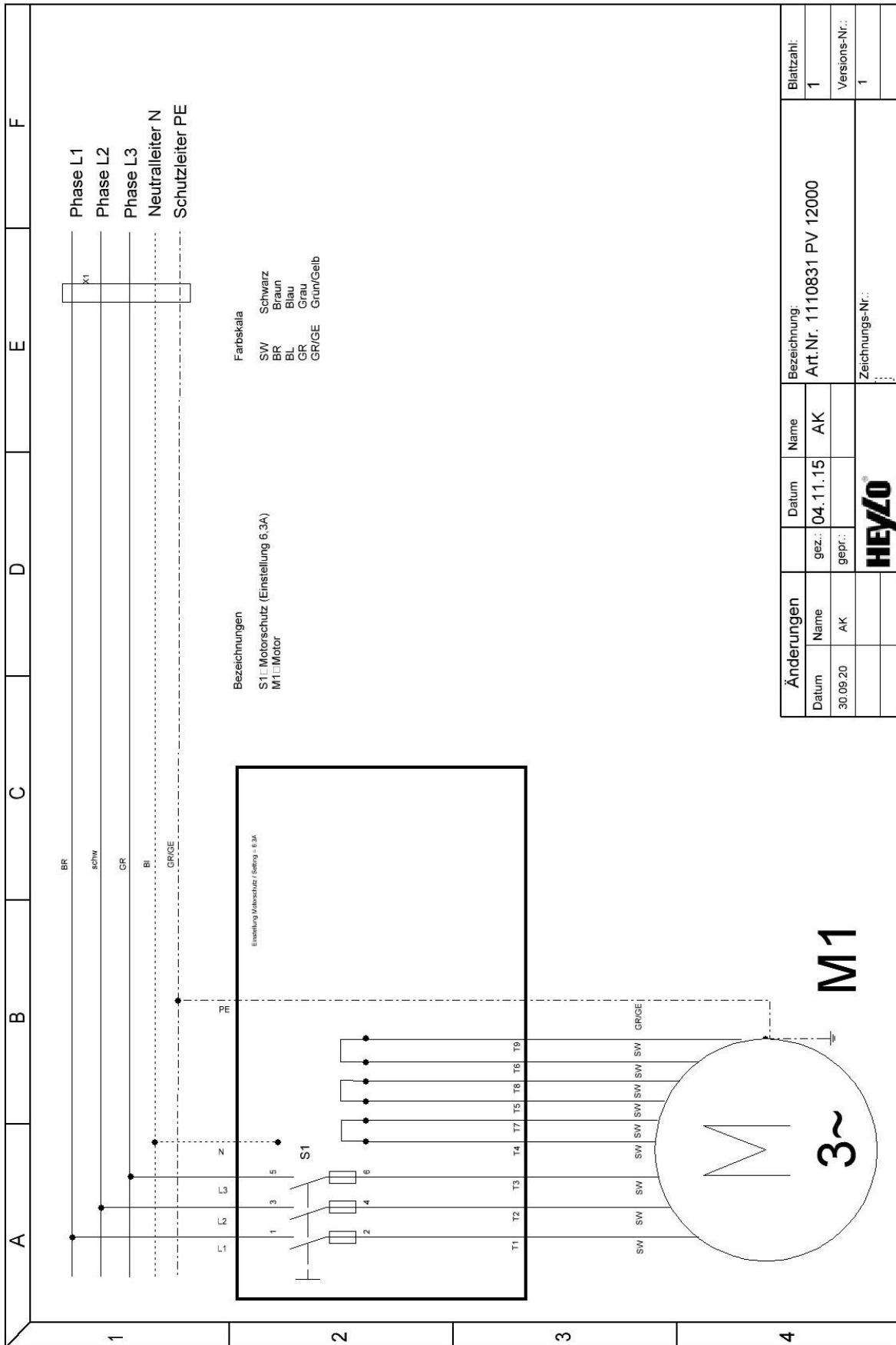
DIN VDE 0700 Part 1 and Part 30
 DIN EN 55014-1:2018-08
 EN 60335-1: 2012-10
 EN 60335-2-30::2013-02

The devices are type-tested in accordance with DIN VDE 0700 Part 1 and Part 30 EN 60335-1 and EN 60335-2-30 and have a CE symbol.

Achim, Germany,
 01/09/2019

Dr. Thomas Wittleder
 - Chief Executive -

22.3 Circuit diagram



SIE HABEN FRAGEN? WIR HELFEN IHNEN GERN!
Do you have any questions? We are happy to help you!

HEYLO Kundendienst – Technischer Support und Service
HEYLO Customer Service – Technical Support and Service

Tel. +49 (0) 42 02 – 97 55 15
Fax +49 (0) 42 02 – 97 55 97
E-Mail: service@heylo.de

Kaufmännische Beratung
Commercial advice

Tel. +49 (0) 42 02 – 97 55 - 0
Fax +49 (0) 42 02 – 97 55 97
E-Mail: info@heylo.de

Mieten Sie HEYLO-Produkte
Hire HEYLO products

Für Ihre Baustelle, Produktion oder Event über das HEYLO-Miet-Netzwerk:
For your construction site, production facility or event via the HEYLO rental network:

www.heylo-mietservice.de

HEYLO GmbH
Im Finigen 9
28832 Achim
info@heylo.de
www.heylo.de

